



**CabinetOffice**  
Social Exclusion Task Force

# Improving life chances for young people leaving care

**Children in Care Symposium: Breaking the cycle of exclusion and disadvantage**

**Thursday 25 September 2008**

**Ann Watt**  
**Deputy Director, Social Exclusion Task Force**





***SETF mission:***

***To extend the opportunities enjoyed by the vast majority of people in the UK today to those whose lives have been characterised by deprivation and exclusion***

- Much has been achieved, for example through investment in public services, tax and benefit change, national minimum wage
- But most vulnerable individuals and families still need intensive support to get their lives back on track
- Based in the Cabinet Office because reducing social exclusion cuts across many Departments and agencies
- Lead Ministers are Ed Miliband and Phil Hope

## Aim and vision for socially excluded adults PSA



**CabinetOffice**  
Social Exclusion Task Force

### **Our aim**

To ensure that the most socially excluded adults are offered the chance to get back on a path to a more successful life, by increasing the proportion who are in settled accommodation and in employment, education or training.

### **Our vision**

- Cross-government, cross-sector approach to effectively meeting the complex needs of vulnerable adults. Jointly owned by CO, CLG, DWP, MoJ, DH, DCSF and DIUS
- Send a clear signal that tackling social exclusion and improving opportunities for vulnerable adults is a top Government priority
- Without a home and job vulnerable adults risk a lifetime of exclusion and wasted potential. Through the PSA the Government wants to extend the aspirations of a home and a job, that most take for granted, to the most excluded.

## Groups that the PSA focuses on



- Four client groups:**
- Young people leaving care
  - Adult offenders under probation supervision
  - Adults receiving secondary mental health services
  - Adults with moderate to severe learning disabilities known to councils

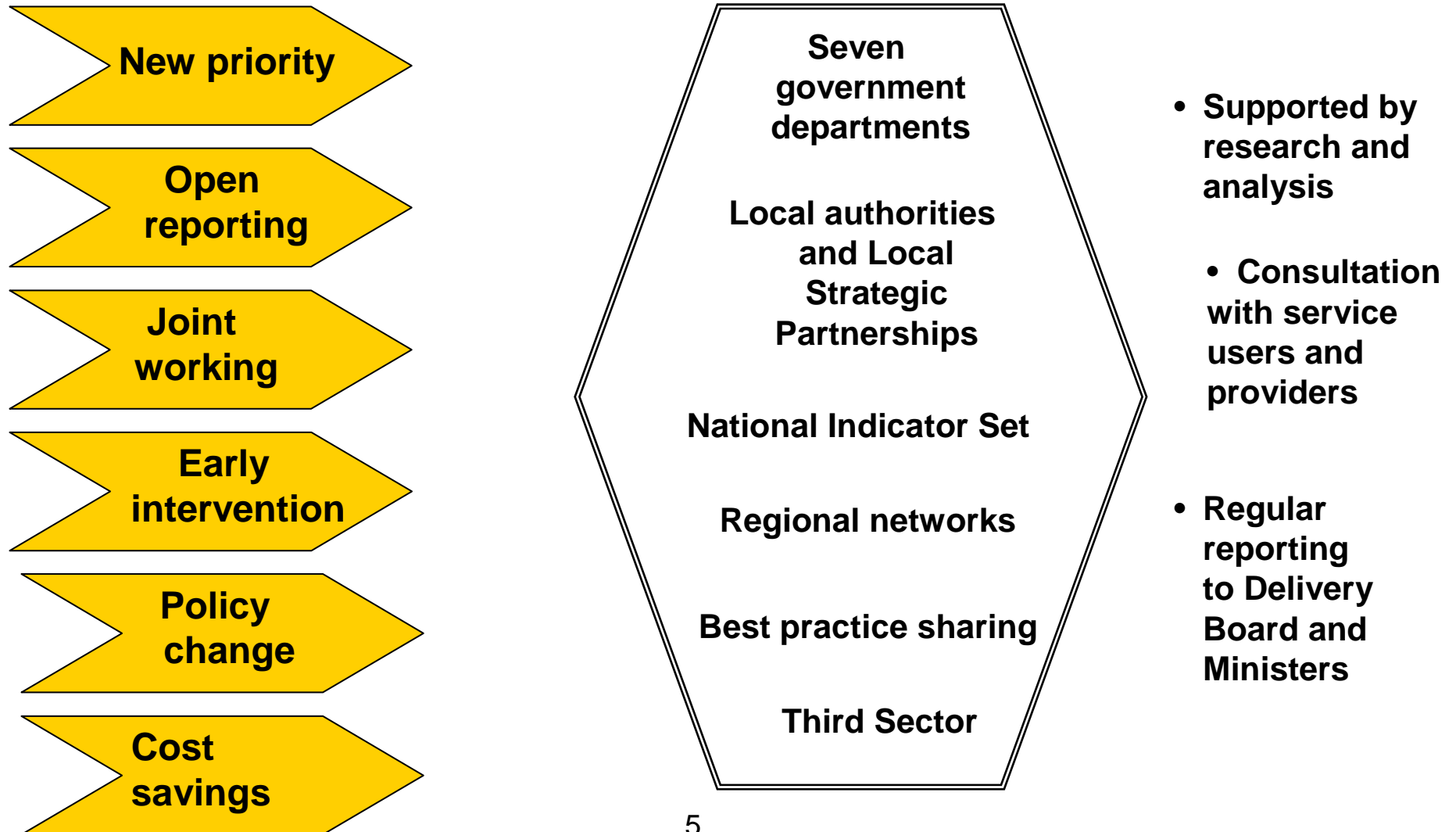
**Rationale for focusing on the four groups:**

- Aspire to a home and a job like everyone else, but may need extra support
- Disproportionately likely to have poor employment and housing outcomes
- In contact with services who should help prevent exclusion (and can measure what is achieved)
- Many are at transition points where we know lives can go either way
- Previous programmes may not have met needs

**And two outcomes of accommodation and education, employment, training:**

- 23% of adult prison population has previously been in care
- a third of homeless people were formerly in care
- only 12% of children in care gain five A\*-C GCSEs, compared to 59% of all children
- 30% of young people aged 19 who have been in care are not in employment, education or training, compared to 13% of all 19 year olds

# How will this PSA help care leavers?



What needs to happen to bring about a step change?



**CabinetOffice**  
Social Exclusion Task Force

- 
- **Delivery of Care Matters - support through transition from care and beyond**
  - **Individualised pathways into EET and accommodation**
  - **Joint working between different organisations, especially housing and children's services**
  - **Address weak performance in some local areas**
  - **Support offered by Jobcentre Plus programmes and incentives within the benefits system**

Questions for you...



**CabinetOffice**  
Social Exclusion Task Force

---

### **What you can do to help**

- Push for progress locally
- Share best practice
- Tell us about policy problems
- Facilitate visits
- Take part in our Community of Practice  
[www.communities.idea.gov.uk](http://www.communities.idea.gov.uk)

### **Questions for you**

- How can we get some quick wins?
- What problems should we be trying to fix?
- Is this mostly about improving delivery, rather than changing policy?

**[www.cabinet-office.gov.uk/social\\_exclusion](http://www.cabinet-office.gov.uk/social_exclusion)**